

**Article III Snow and Ice Removal:**

[Adopted 8-13-1991 by Ch. No. 983 as § 11-4 of the 1991 Code (as amended through Ch. No. 1171); amended in its entirety at time of adoption of Code (see Ch. 1, General Provisions, Art. I)]

**§ 225-10 - Removal required:**

The owner of any building or lot of land bordering on any street, highway, square or public place where there is a sidewalk, as hereinafter defined in the zones described in §225-11, shall remove or cause such snow or ice to be removed from such sidewalk within 24 hours after any snow or freezing rain has ceased to fall. In those instances where it is not practicable to remove ice, then it shall be treated with sand or other suitable material.

**§ 225-11 - Zones in which removal is required:**

The following zones within the Town of Westerly are hereby established for the purpose of requiring owners of buildings and lots of land to remove snow or ice from sidewalks as required by §225-10:

**A. Business Zone.** This zone is defined as any commercial area that has been designated as a business zone for zoning purposes.

**B. Elementary School Zone** is any area that is within a one-half-mile radius of any public or private elementary school.

**C. Secondary School Zone** is any area that is within a one-mile radius of any public or private secondary school.

**§ 225-11.1 - Violations and penalties:**

As used in this article, the following terms shall have the meaning indicated:

**SIDEWALK** - Any walkway adjacent to a public road or street that is either supported or unsupported by a curbing and is constructed of asphalt or concrete.

**§ 225-11.3 - Exceptions:**

This article shall not apply to those business zones that are seasonal in nature.

**§ 225-11.4 - Map of zones:**

The Town shall publish on its official website a map that defines the Business and School Zones.

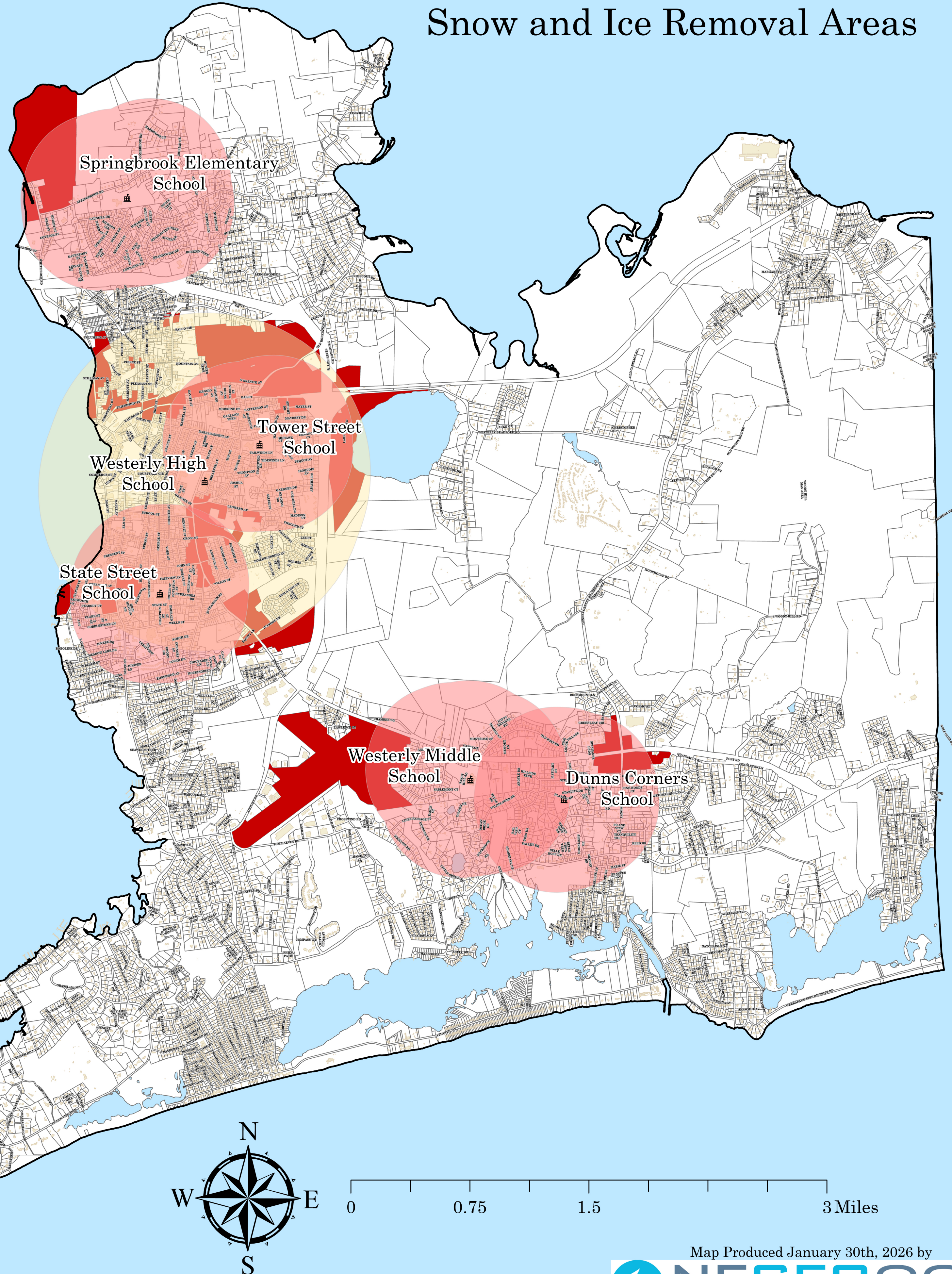
**§ 225-11.5 - Enforcement:**

All sworn members of the Police Department are authorized to enforce the provisions of this article. The jurisdiction and cognizance of such violation shall be, in the first instance, in the Municipal Court for the Town of Westerly in accordance with Chapter 15 of this Code.

# Town of Westerly, RI



## Snow and Ice Removal Areas



### Snow and Ice Removal Areas

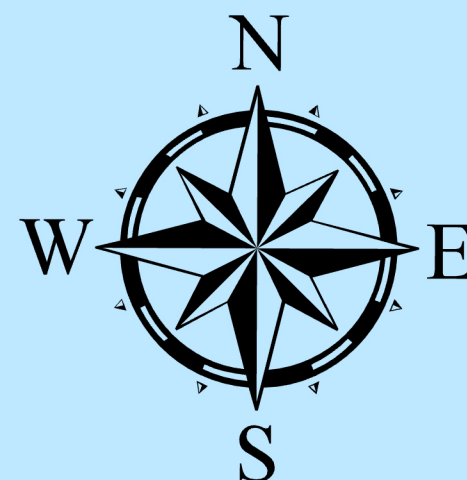
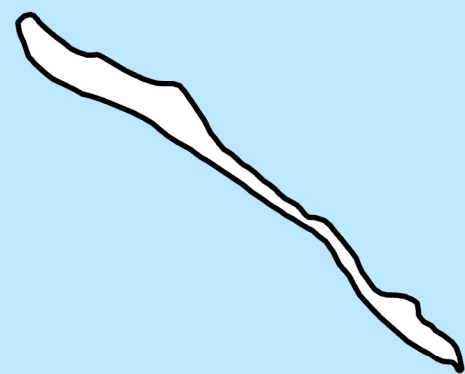
Commercial & Business Zones

Elementary Schools 1/2 Mile Radius

- Dunns Corners School
- Springbrook School
- State Street School
- Tower Street School
- Westerly Middle School

Secondary School 1 Mile Radius

Westerly High School



0 0.75 1.5 3 Miles

Map Produced January 30th, 2026 by

